



# Monthly Ridership and Service Level Report September, 2025

**“Safety, Courtesy, Reliability,  
and the Environment”**

## TABLE OF CONTENTS

|  |     |
|--|-----|
| Glossary & Route Abbreviations   | 3-4 |
| Summary - All Routes   | 5   |
| Total Ridership per Route - Blacksburg, Fixed Routes                         | 6   |
| Total Ridership per Route - Christiansburg Routes                            | 7   |
| Passengers per Revenue Hour per Route - All Fixed Routes                     | 8   |
| Passengers per Revenue Hour per Day of Week - All Fixed Routes               | 9   |
| Passengers per Revenue Mile per Day of Week - All Fixed Routes               | 10  |
| Passengers per Revenue Hour per Day of Week - Demand Response Service        | 11  |
| Passengers per Revenue Mile per Day of Week - Demand Response Service        | 12  |
| Average Ridership and Revenue Hours by Time of Day - All Fixed Routes        | 13  |
| Graph: Average Total Passengers by Time of Day - All Fixed Routes            | 14  |
| Graph: Average Passengers per Revenue Hour by Time of Day - All Fixed Routes | 15  |

## GLOSSARY

- Demand-Response Service (DR): DR service operates in response to calls from passengers or their agents to the transit operator, who then dispatches a vehicle to pick up the passengers and transport them to their destinations. This service does not operate on a fixed route or schedule and satisfies a special need.
- Driver Hours (DH): DH are the hours a driver is on duty, including hours on stand-by, driving to and from the garage, and when there are no passengers on board. These are the hours paid to the drivers; a combination of revenue and non-revenue hours.
- Emergency Service: This is for changes in planned service level operated due to long term (more than 7 days) situations that have an impact on the amount of service provided due to the circumstances of the declared emergency.
- Extra Service: Additional vehicles and routes to cover an Event such as Football.
- Fiscal Year (FY): The operational year starting from July 1<sup>st</sup> to June 30<sup>th</sup> and is year abbreviated with the second Calendar Year. (IE FY 19 is July 1, 2018 to June 30, 2019)
- Fixed Route Service (FR): FR operate along a specific route according to a fixed or preset schedule. Each trip serves the same stops, continuously, until service ends. Also known as Motor Bus Service (MB)
- Full Service: This is our peak service typically operated during the fall and spring semesters. During Full Service, all routes are in operation with multiple buses operating on each route for peak frequency typically every 10-15 minutes. Tandems are sometimes utilized in the first couple of weeks of Fall and Spring Service to increase capacity on high demand routes.
- Intermediate Service: This service operates the week before Virginia Tech classes resume for the fall semester and other select days throughout the year. In previous years it strongly resembled the Full Service with lower frequency on most routes. Currently it is more Reduced Service with extended service hours.
- No Service: This service occurs on five different days: New Year's Day, Memorial Day, July 4<sup>th</sup>, Thanksgiving, and Christmas. No routes run on these days.
- Previous Year: These sections refer to data for the same month in the previous year.
- Reduced Service: This service is operated outside of fall and spring semesters during winter, spring, summer and fall breaks. Each route provides 30 minute or hourly service depending on the length of the route. Some routes do not operate; others follow an altered route.
- Revenue Hours (RH): RH are the hours of service where a bus is providing passenger service.
- Revenue Mile (RM): RM are the miles a bus travels on a route while providing passenger service.
- Ridership: Ridership is the number of people using a public transportation service in a given time period.
- Tandems: Additional vehicles that follow the scheduled route vehicles on high demand routes during the first few weeks of Full Service in the Fall and Spring. These catch the overloads and late arrivals of passengers new to the service at this time.
- Year-to-Date (YTD): YTD numbers are the sum of values for a period beginning July 1st of the current Fiscal Year until the end of a specified month.

### Route Abbreviations

| Abbreviation | Route Full Name                   |
|--------------|-----------------------------------|
| ADA          | ADA Lot (Football Extra)          |
| BLU          | Explorer Blue                     |
| BMR          | Beamer Way                        |
| CAS          | Campus Shuttle                    |
| CRB          | Carpenter Boulevard               |
| CRC          | Corporate Research Center Shuttle |
| EMS          | Early Morning Service             |
| GLD          | Explorer Gold                     |
| HDG          | Harding Avenue                    |
| HWA          | Hethwood A                        |
| HWB          | Hethwood B                        |
| HWC          | Hethwood (combined)               |
| HXP          | Hokie Express                     |
| NMG          | North Main Givens                 |

| Abbreviation | Route Full Name          |
|--------------|--------------------------|
| NMP          | North Main Patrick Henry |
| PHB          | Patrick Henry B          |
| PHD          | Patrick Henry Drive      |
| PRG          | Progress Street          |
| SMA          | South Main Airport       |
| SME          | South Main Ellett        |
| SMS          | South Main Southpark     |
| TCP          | Toms Creek Progress      |
| TCR          | Toms Creek Road          |
| TTT          | Two Town Trolley         |
| UCB          | University City          |
| USD          | Unscheduled/Adhoc        |
| ACC          | Access (DR)              |
| GAR          | GoAnywhere Route (DR)    |

### Recent Changes

Addition of the BMR route. The EMS route is no longer in service and included only to keep the totals for the prior year.

**Summary**  
All Routes  
Month: September, 2025

|                                 | Current Month | Previous Year | Change by Month | Current YTD Total | Previous YTD Total | YTD Change |
|---------------------------------|---------------|---------------|-----------------|-------------------|--------------------|------------|
| <b>Total Passengers</b>         | 739,532       | 654,341       | 13%             | 1,097,607         | 979,086            | 12%        |
| <b>Total Revenue Hours</b>      | 13,312.37     | 11,564.22     | 15%             | 31,153.44         | 27,364.56          | 14%        |
| <b>Total Revenue Miles</b>      | 124,212.50    | 116,835.00    | 6%              | 313,949.20        | 282,683.00         | 11%        |
| <b>Total Driver Hours</b>       | 15,053.25     | 12,760.00     | 18%             | 34,020.03         | 30,332.30          | 12%        |
| <b>Passengers/RH</b>            | 55.55         | 56.58         | -2%             | 35.23             | 35.78              | -2%        |
| <b>Passengers/RM</b>            | 5.95          | 5.60          | 6%              | 3.50              | 3.46               | 1%         |
| <b>Passengers/DH</b>            | 49.13         | 51.28         | -4%             | 32.26             | 32.28              | 0%         |
| <b>Full Service Weekdays</b>    | 21            | 20            | 1               | 26                | 25                 | 1          |
| <b>Full Service Weekends</b>    | 8             | 9             | (1)             | 12                | 12                 | 0          |
| <b>Reduced Service Weekdays</b> | 0             | 0             | 0               | 33                | 34                 | (1)        |
| <b>Reduced Service Weekends</b> | 0             | 0             | 0               | 14                | 14                 | 0          |
| <b>Intermediate Service</b>     | 1             | 1             | 0               | 6                 | 6                  | 0          |
| <b>No Service Days</b>          | 0             | 0             | 0               | 1                 | 1                  | 0          |

\*Note: These numbers include Blacksburg and Christiansburg: Motor Bus, Demand Response and Extra Services.

# Total Ridership per Route

Blacksburg

Month: September, 2025

| Route (Former Route)       | Current Month  | % of Ridership | Previous Year  | Change by Month | Current YTD Total | % of YTD Ridership | Previous YTD Total | YTD Change |
|----------------------------|----------------|----------------|----------------|-----------------|-------------------|--------------------|--------------------|------------|
| ADA                        | 1,462          | 0.20%          | 937            | 56%             | 1,462             | 0.13%              | 937                | 56%        |
| BMR                        | 13,756         | 1.87%          | N/A            | N/A             | 18,300            | 1.68%              | N/A                | N/A        |
| CAS                        | 135,155        | 18.36%         | 114,267        | 18%             | 189,439           | 17.42%             | 154,816            | 22%        |
| CRB                        | 17,043         | 2.32%          | 14,677         | 16%             | 21,703            | 2.00%              | 18,593             | 17%        |
| CRC                        | 15,909         | 2.16%          | 14,045         | 13%             | 26,024            | 2.39%              | 23,248             | 12%        |
| EMS                        | N/A            | N/A            | 5              | N/A             | N/A               | N/A                | 8                  | N/A        |
| HDG                        | 23,789         | 3.23%          | 22,966         | 4%              | 39,502            | 3.63%              | 36,575             | 8%         |
| HWA                        | 40,419         | 5.49%          | 32,302         | 25%             | 49,872            | 4.59%              | 50,873             | -2%        |
| HWB                        | 34,777         | 4.73%          | 31,743         | 10%             | 43,256            | 3.98%              | 51,287             | -16%       |
| HWC                        | 28,301         | 3.85%          | 24,774         | 14%             | 63,396            | 5.83%              | 35,967             | 76%        |
| HXP                        | 40,837         | 5.55%          | 30,996         | 32%             | 53,799            | 4.95%              | 44,174             | 22%        |
| NMG                        | 41,955         | 5.70%          | 36,334         | 15%             | 62,291            | 5.73%              | 57,007             | 9%         |
| NMP                        | 11,849         | 1.61%          | 11,393         | 4%              | 18,028            | 1.66%              | 17,247             | 5%         |
| PHB                        | 42,626         | 5.79%          | 40,470         | 5%              | 52,574            | 4.83%              | 50,891             | 3%         |
| PHD                        | 49,117         | 6.67%          | 49,891         | -2%             | 69,894            | 6.43%              | 71,850             | -3%        |
| PRG                        | 47,069         | 6.40%          | 45,229         | 4%              | 58,446            | 5.37%              | 60,824             | -4%        |
| SMA                        | 18,124         | 2.46%          | 12,854         | 41%             | 33,189            | 3.05%              | 19,628             | 69%        |
| SME                        | 9,201          | 1.25%          | 7,670          | 20%             | 17,617            | 1.62%              | 14,008             | 26%        |
| SMS                        | 19,013         | 2.58%          | 20,476         | -7%             | 37,582            | 3.46%              | 42,291             | -11%       |
| TCP                        | 33,064         | 4.49%          | 30,114         | 10%             | 64,551            | 5.94%              | 43,071             | 50%        |
| TCR                        | 49,885         | 6.78%          | 47,284         | 6%              | 63,446            | 5.83%              | 70,981             | -11%       |
| TTT                        | 9,737          | 1.32%          | 10,551         | -8%             | 22,744            | 2.09%              | 22,493             | 1%         |
| UCB                        | 51,336         | 6.97%          | 50,533         | 2%              | 75,787            | 6.97%              | 76,681             | -1%        |
| USD                        | 0              | 0.00%          | 0              | 0%              | 492               | 0.05%              | 1,247              | -61%       |
| ACC                        | 1,597          | 0.22%          | 1,266          | 26%             | 4,108             | 0.38%              | 3,713              | 11%        |
| <b>Totals</b>              | <b>736,021</b> | <b>100.00%</b> | <b>650,777</b> | <b>13%</b>      | <b>1,087,502</b>  | <b>100.00%</b>     | <b>968,410</b>     | <b>12%</b> |
| <b>Blacksburg MB Total</b> | 734,424        | 99.78%         | 649,511        | 13.07%          | 1,083,394         | 99.62%             | 964,697            | 12.30%     |
| <b>Blacksburg DR Total</b> | 1,597          | 0.22%          | 1,266          | 26.15%          | 4,108             | 0.38%              | 3,713              | 10.64%     |
| <b>Totals</b>              | <b>736,021</b> | <b>100%</b>    | <b>650,777</b> | <b>13%</b>      | <b>1,087,502</b>  | <b>100%</b>        | <b>968,410</b>     | <b>12%</b> |

## Total Ridership per Route

Christiansburg: Motor Bus and Demand Response

Month: September, 2025

| Route                          | Current Month | % of Ridership | Previous Year | Change by Month | Current YTD Total | % of YtD Ridership | Previous YTD  | YTD Change |
|--------------------------------|---------------|----------------|---------------|-----------------|-------------------|--------------------|---------------|------------|
| <b>BLU</b>                     | 1,164         | 33.15%         | 1,115         | 4%              | 3,420             | 33.84%             | 3,426         | 0%         |
| <b>GLD/GRN</b>                 | 1,508         | 42.95%         | 1,412         | 7%              | 4,262             | 42.18%             | 4,274         | 0%         |
| <b>GAR</b>                     | 839           | 23.90%         | 1,037         | -19%            | 2,423             | 23.98%             | 2,976         | -19%       |
| <b>Totals</b>                  | <b>3,511</b>  | <b>100%</b>    | <b>3,564</b>  | <b>-1%</b>      | <b>10,105</b>     | <b>100%</b>        | <b>10,676</b> | <b>-5%</b> |
| <b>Christiansburg MB Total</b> | 2,672         | 76.10%         | 2,527         | 5.74%           | 7,682             | 76.02%             | 7,700         | -0.23%     |
| <b>Christiansburg DR Total</b> | 839           | 23.90%         | 1,037         | -19.09%         | 2,423             | 23.98%             | 2,976         | -18.58%    |
| <b>Totals</b>                  | <b>3,511</b>  | <b>100%</b>    | <b>3,564</b>  | <b>-1%</b>      | <b>10,105</b>     | <b>100%</b>        | <b>10,676</b> | <b>-5%</b> |

**Passengers per Revenue Hour per Route**

All Fixed Routes

Month: September, 2025

| Route (Former Route) | Current Month | Previous Year | Change by Month |
|----------------------|---------------|---------------|-----------------|
| <b>ADA</b>           | 13.60         | 17.43         | -22%            |
| <b>BLU</b>           | 4.57          | 4.75          | -4%             |
| <b>BMR</b>           | 24.58         | N/A           | N/A             |
| <b>CAS</b>           | 92.02         | 92.03         | 0%              |
| <b>CRB</b>           | 69.21         | 62.46         | 11%             |
| <b>CRC</b>           | 20.90         | 19.45         | 7%              |
| <b>(EMS-FY25)</b>    | N/A           | 0.16          | N/A             |
| <b>GLD</b>           | 5.88          | 5.62          | 5%              |
| <b>HDG</b>           | 31.11         | 30.55         | 2%              |
| <b>HWA</b>           | 87.66         | 71.81         | 22%             |
| <b>HWB</b>           | 75.63         | 70.65         | 7%              |
| <b>HWC</b>           | 66.75         | 62.84         | 6%              |
| <b>HXP</b>           | 53.54         | 41.19         | 30%             |
| <b>NMG</b>           | 74.82         | 138.19        | -46%            |
| <b>NMP</b>           | 48.51         | 24.23         | 100%            |
| <b>PHB</b>           | 87.49         | 87.27         | 0%              |
| <b>PHD</b>           | 87.62         | 93.02         | -6%             |
| <b>PRG</b>           | 101.70        | 99.84         | 2%              |
| <b>SMA</b>           | 37.77         | 49.19         | -23%            |
| <b>SME</b>           | 36.65         | 35.51         | 3%              |
| <b>SMS</b>           | 38.87         | 54.21         | -28%            |
| <b>TCP</b>           | 79.03         | 77.23         | 2%              |
| <b>TCR</b>           | 108.19        | 104.06        | 4%              |
| <b>TTT</b>           | 24.36         | 27.39         | -11%            |
| <b>UCB</b>           | 79.43         | 80.40         | -1%             |
| <b>USD</b>           | 0.00          | 0.00          | N/A             |



## Passengers per Revenue Hour per Day of Week

All Fixed Routes

Month: September, 2025

| Week Day         | Current Month  |                  |              | Previous Year  |                  |              | Change<br>Pass/RH |
|------------------|----------------|------------------|--------------|----------------|------------------|--------------|-------------------|
|                  | Passengers     | Revenue<br>Hours | Pass/RH      | Passengers     | Revenue<br>Hours | Pass/RH      |                   |
| <b>Sunday</b>    | 21,016         | 536.20           | 39.19        | 24,631         | 596.75           | 41.28        | -5%               |
| <b>Monday</b>    | 130,562        | 2,241.07         | 58.26        | 125,436        | 2,039.12         | 61.51        | -5%               |
| <b>Tuesday</b>   | 162,421        | 2,405.95         | 67.51        | 123,587        | 1,747.00         | 70.74        | -5%               |
| <b>Wednesday</b> | 126,710        | 1,919.94         | 66.00        | 119,944        | 1,756.57         | 68.28        | -3%               |
| <b>Thursday</b>  | 128,993        | 1,924.16         | 67.04        | 118,590        | 1,753.48         | 67.63        | -1%               |
| <b>Friday</b>    | 107,185        | 1,932.33         | 55.47        | 97,927         | 1,753.82         | 55.84        | -1%               |
| <b>Saturday</b>  | 60,209         | 1,029.03         | 58.51        | 41,923         | 820.45           | 51.10        | 15%               |
| <b>Total</b>     | <b>737,096</b> | <b>11,988.68</b> | <b>61.48</b> | <b>652,038</b> | <b>10,467.19</b> | <b>62.29</b> | <b>-1%</b>        |

\* Note: these numbers DO NOT include Demand Response Service

## Passengers per Revenue Mile per Day of Week

All Fixed Routes

Month: September, 2025

| Week Day         | <u>Current Month</u> |                  |             | <u>Previous Year</u> |                  |             | Change<br>Pass/RM |
|------------------|----------------------|------------------|-------------|----------------------|------------------|-------------|-------------------|
|                  | Passengers           | Revenue<br>Miles | Pass/RM     | Passengers           | Revenue<br>Miles | Pass/RM     |                   |
| <b>Sunday</b>    | 21,016               | 5,475            | 3.84        | 24,631               | 6,344            | 3.88        | -1%               |
| <b>Monday</b>    | 130,562              | 17,428           | 7.49        | 125,436              | 20,516           | 6.11        | 23%               |
| <b>Tuesday</b>   | 162,421              | 23,407           | 6.94        | 123,587              | 17,496           | 7.06        | -2%               |
| <b>Wednesday</b> | 126,710              | 18,699           | 6.78        | 119,944              | 17,470           | 6.87        | -1%               |
| <b>Thursday</b>  | 128,993              | 18,694           | 6.90        | 118,590              | 17,544           | 6.76        | 2%                |
| <b>Friday</b>    | 107,185              | 18,797           | 5.70        | 97,927               | 17,575           | 5.57        | 2%                |
| <b>Saturday</b>  | 60,209               | 9,146            | 6.58        | 41,923               | 7,843            | 5.35        | 23%               |
| <b>Total</b>     | <b>737,096</b>       | <b>111,646</b>   | <b>6.60</b> | <b>652,038</b>       | <b>104,788</b>   | <b>6.22</b> | <b>6%</b>         |

\* Note: these numbers DO NOT include Demand Response Service

**Passengers per Revenue Hour per Day of Week**  
Demand Response Service  
Month: September, 2025

**Access Current Month**

| Day of Week      | Passengers   | Revenue Hours | Pass/RH     |
|------------------|--------------|---------------|-------------|
| <b>Sunday</b>    | 52           | 28.45         | 1.83        |
| <b>Monday</b>    | 314          | 201.00        | 1.56        |
| <b>Tuesday</b>   | 354          | 213.70        | 1.66        |
| <b>Wednesday</b> | 272          | 176.12        | 1.54        |
| <b>Thursday</b>  | 300          | 165.47        | 1.81        |
| <b>Friday</b>    | 225          | 146.57        | 1.54        |
| <b>Saturday</b>  | 80           | 58.63         | 1.36        |
| <b>Total</b>     | <b>1,597</b> | <b>989.93</b> | <b>1.61</b> |

**Access Previous Year**

| Passengers   | Revenue Hours | Pass/RH     | Change Pass/RH |
|--------------|---------------|-------------|----------------|
| 57           | 31.57         | 1.81        | 1%             |
| 214          | 144.80        | 1.48        | 6%             |
| 259          | 144.55        | 1.79        | -8%            |
| 218          | 125.23        | 1.74        | -11%           |
| 231          | 135.89        | 1.70        | 7%             |
| 194          | 118.85        | 1.63        | -6%            |
| 93           | 53.58         | 1.74        | -21%           |
| <b>1,266</b> | <b>754.47</b> | <b>1.68</b> | <b>-4%</b>     |

**GoAnywhere Current Month**

| Day of Week      | Passengers | Revenue Hours | Pass/RH     |
|------------------|------------|---------------|-------------|
| <b>Sunday</b>    | 0          | 0.00          | 0.00        |
| <b>Monday</b>    | 186        | 69.42         | 2.68        |
| <b>Tuesday</b>   | 183        | 70.28         | 2.60        |
| <b>Wednesday</b> | 135        | 55.52         | 2.43        |
| <b>Thursday</b>  | 144        | 54.32         | 2.65        |
| <b>Friday</b>    | 158        | 56.72         | 2.79        |
| <b>Saturday</b>  | 33         | 27.50         | 1.20        |
| <b>Total</b>     | <b>839</b> | <b>333.75</b> | <b>2.51</b> |

**GoAnywhere Previous Year**

| Passengers   | Revenue Hours | Pass/RH     | Change Pass/RH |
|--------------|---------------|-------------|----------------|
| 0            | 0.00          | 0.00        | 0%             |
| 203          | 71.07         | 2.86        | -6%            |
| 201          | 59.65         | 3.37        | -23%           |
| 202          | 61.73         | 3.27        | -26%           |
| 188          | 62.89         | 2.99        | -11%           |
| 174          | 58.20         | 2.99        | -7%            |
| 69           | 29.02         | 2.38        | -50%           |
| <b>1,037</b> | <b>342.56</b> | <b>3.03</b> | <b>-17%</b>    |

\*Please note: these numbers DO NOT include Fixed Route Service.

**Passengers per Revenue Mile per Day of Week**  
Demand Response Service  
Month: September, 2025

| <u>Access Current Month</u> |              |               |             | <u>Access Previous Year</u> |               |             |                |
|-----------------------------|--------------|---------------|-------------|-----------------------------|---------------|-------------|----------------|
| Day of Week                 | Passengers   | Revenue Miles | Pass/RM     | Passengers                  | Revenue Miles | Pass/RM     | Change Pass/RM |
| Sunday                      | 52           | 295           | 0.18        | 57                          | 243           | 0.23        | -25%           |
| Monday                      | 314          | 1,680         | 0.19        | 214                         | 1,293         | 0.17        | 13%            |
| Tuesday                     | 354          | 1,781         | 0.20        | 259                         | 1,397         | 0.19        | 7%             |
| Wednesday                   | 272          | 1,406         | 0.19        | 218                         | 1,248         | 0.17        | 11%            |
| Thursday                    | 300          | 1,565         | 0.19        | 231                         | 1,433         | 0.16        | 19%            |
| Friday                      | 225          | 1,236         | 0.18        | 194                         | 1,087         | 0.18        | 2%             |
| Saturday                    | 80           | 368           | 0.22        | 93                          | 489           | 0.19        | 14%            |
| <b>Total</b>                | <b>1,597</b> | <b>8,331</b>  | <b>0.19</b> | <b>1,266</b>                | <b>7,190</b>  | <b>0.18</b> | <b>9%</b>      |

| <u>Go Anywhere Current Month</u> |            |               |             | <u>Go Anywhere Previous Year</u> |               |             |                |
|----------------------------------|------------|---------------|-------------|----------------------------------|---------------|-------------|----------------|
| Day of Week                      | Passengers | Revenue Miles | Pass/RM     | Passengers                       | Revenue Miles | Pass/RM     | Change Pass/RM |
| Sunday                           | 0          | 0             | 0.00        | 0                                | 0             | 0.00        | 0%             |
| Monday                           | 186        | 898           | 0.21        | 203                              | 1,003         | 0.20        | 2%             |
| Tuesday                          | 183        | 930           | 0.20        | 201                              | 896           | 0.22        | -12%           |
| Wednesday                        | 135        | 690           | 0.20        | 202                              | 923           | 0.22        | -11%           |
| Thursday                         | 144        | 751           | 0.19        | 188                              | 890           | 0.21        | -9%            |
| Friday                           | 158        | 759           | 0.21        | 174                              | 853           | 0.20        | 2%             |
| Saturday                         | 33         | 208           | 0.16        | 69                               | 292           | 0.24        | -33%           |
| <b>Total</b>                     | <b>839</b> | <b>4,235</b>  | <b>0.20</b> | <b>1,037</b>                     | <b>4,857</b>  | <b>0.21</b> | <b>-7%</b>     |

\*Please note: these numbers DO NOT include Fixed Route Service.

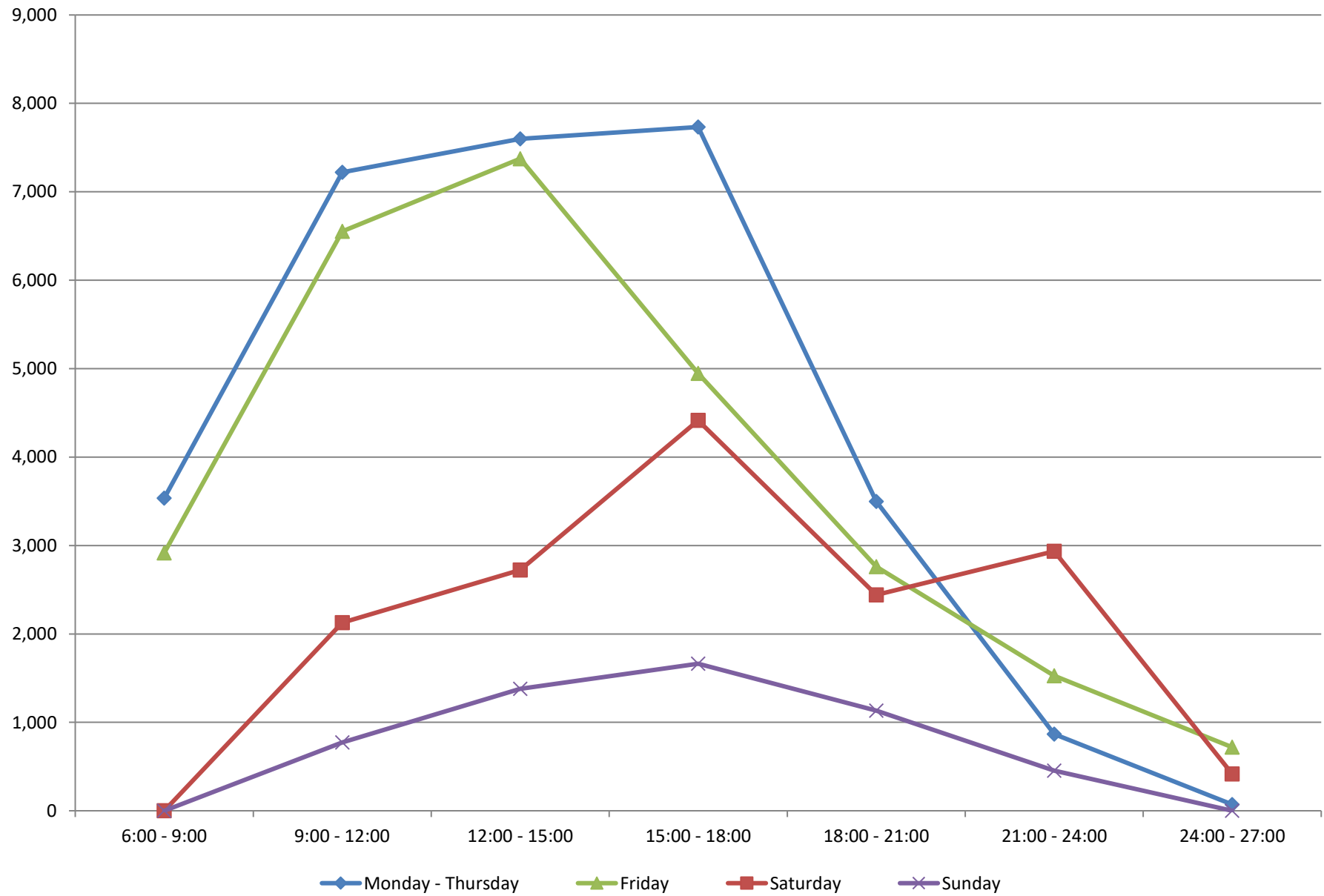
## Average Ridership and Revenue Hours by Time of Day

All Fixed Routes

Month: September, 2025

|                   | Time of Day   | Avg Total Passengers | Average RH | Avg Pass. per RH |
|-------------------|---------------|----------------------|------------|------------------|
| Monday - Thursday | 6:00 - 9:00   | 3,536.39             | 66.37      | 53.28            |
|                   | 9:00 - 12:00  | 7,219.50             | 102.56     | 70.40            |
|                   | 12:00 - 15:00 | 7,598.11             | 102.51     | 74.12            |
|                   | 15:00 - 18:00 | 7,732.83             | 102.41     | 75.51            |
|                   | 18:00 - 21:00 | 3,497.17             | 64.68      | 54.07            |
|                   | 21:00 - 24:00 | 868.17               | 27.70      | 31.34            |
|                   | 24:00 - 27:00 | 71.00                | 5.50       | 12.91            |
| Friday            | 6:00 - 9:00   | 2,915.00             | 68.07      | 42.83            |
|                   | 9:00 - 12:00  | 6,553.25             | 104.81     | 62.52            |
|                   | 12:00 - 15:00 | 7,374.50             | 104.88     | 70.32            |
|                   | 15:00 - 18:00 | 4,947.75             | 95.59      | 51.76            |
|                   | 18:00 - 21:00 | 2,760.50             | 62.54      | 44.14            |
|                   | 21:00 - 24:00 | 1,527.00             | 27.70      | 55.13            |
|                   | 24:00 - 27:00 | 718.25               | 19.50      | 36.83            |
| Saturday          | 6:00 - 9:00   | 0.00                 | 0.25       | 0.00             |
|                   | 9:00 - 12:00  | 2,127.75             | 40.68      | 52.31            |
|                   | 12:00 - 15:00 | 2,722.50             | 38.13      | 71.41            |
|                   | 15:00 - 18:00 | 4,414.50             | 55.46      | 79.60            |
|                   | 18:00 - 21:00 | 2,441.50             | 50.75      | 48.11            |
|                   | 21:00 - 24:00 | 2,934.25             | 50.69      | 57.89            |
|                   | 24:00 - 27:00 | 415.50               | 21.50      | 19.33            |
| Sunday            | 6:00 - 9:00   | 0.00                 | 0.00       | 0.00             |
|                   | 9:00 - 12:00  | 772.25               | 24.80      | 31.14            |
|                   | 12:00 - 15:00 | 1,379.75             | 30.00      | 45.99            |
|                   | 15:00 - 18:00 | 1,663.00             | 30.00      | 55.43            |
|                   | 18:00 - 21:00 | 1,133.50             | 22.75      | 49.82            |
|                   | 21:00 - 24:00 | 453.25               | 21.00      | 21.58            |
|                   | 24:00 - 27:00 | 0.00                 | 0.00       | 0.00             |

**Average Total Passengers by Time of Day, All Fixed Routes**



**Average Passengers per Revenue Hour by Time of Day, All Fixed Routes**

